

MakeNews



Green light for Phase 2 of Alconbury Weald

**New Watch Office
Bar and Kitchen
opening soon**



**Alconbury Weald
Christmas Market
on 30 November**



**Heritage Area starts
to take shape at
Alconbury Weald**



**Community garden
launching in the
spring**



- Alconbury Weald update**
- 04 Development update
- 06 Watch Office Bar and Kitchen
- 07 New healthcare facility at Alconbury Weald
- 08 New allotments and community garden
- 10 Green light for next phase
- 12 Southern Gateway opening link to Huntingdon
- Heritage**
- 15 Heritage Area Action Plan
- Living**
- 18 Ways to live at Alconbury Weald
- 11 Meet the housebuilders
- Community**
- 20 Weekly activities
- 21 Events
- Education focus**
- 24 Jemima House Day Nursery
- 25 Ermine Street Church Academy
- 26 Prestley Wood Academy
- 27 Secondary School update
- 28 Work experience
- Huntingdonshire**
- 29 Huntingdonshire's wider growth plans
- Environment**
- 30 Water: a precious resource
- 31 Sustainable water management
- Enterprise Campus**
- 32 Latest news: MM Flowers
- 33 The Club
- Travel and transport**
- 34 Enhanced bus service
- 35 Pedal power
- Car sharing
- Big Commuter Survey
- A141 consultation
- 36 **Contact**



MakeNews

Make/News is produced by Urban&Civic — master developer of Alconbury Weald — to update residents and our neighbouring communities on progress and news from the growing community. It is distributed to Alconbury Weald, Alconbury village, Alconbury Weston, the Stukeleys and Abbots Ripton, as well as being available in housebuilder marketing suites and other public places across Alconbury Weald.



Please recycle responsibly when you have finished with this newsletter

Hello



Rebecca Britton
Regional Director, Communications, Communities and Partnerships
E rbritton@urbanandcivic.com
T 01480 413141
M 07739 339889



Paul Murfin
Communications and Partnerships Manager
E paul.murfin@urbanandcivic.com
T 01480 413141
M 07407 605119



Natalie Leigh-Brown
Community Development
E natalie.leigh-brown@urbanandcivic.com
T 01480 413141
M 07823 527068

Hello and welcome to our Autumn 2024 newsletter, with updates on the latest news and developments at Alconbury Weald.

There's been lots happening around Alconbury Weald in the last few months. Our key highlights for the first phase of the development include the new Watch Office Bar and Kitchen opening soon, plans progressing for an interim healthcare facility and work starting on the new community garden and allotments for a spring opening.

Alconbury Weald's second phase has been cleared for take-off, with planning consent for 1,500 homes on the Grange Farm area of the development and progress on the delivery of the 150 acre Prestley Park. Work will start on the delivery of the Southern Gateway to Alconbury Weald in the coming weeks. This will connect the development's central Boulevard with the A141 and when fully completed provide direct access into and from Huntingdon.

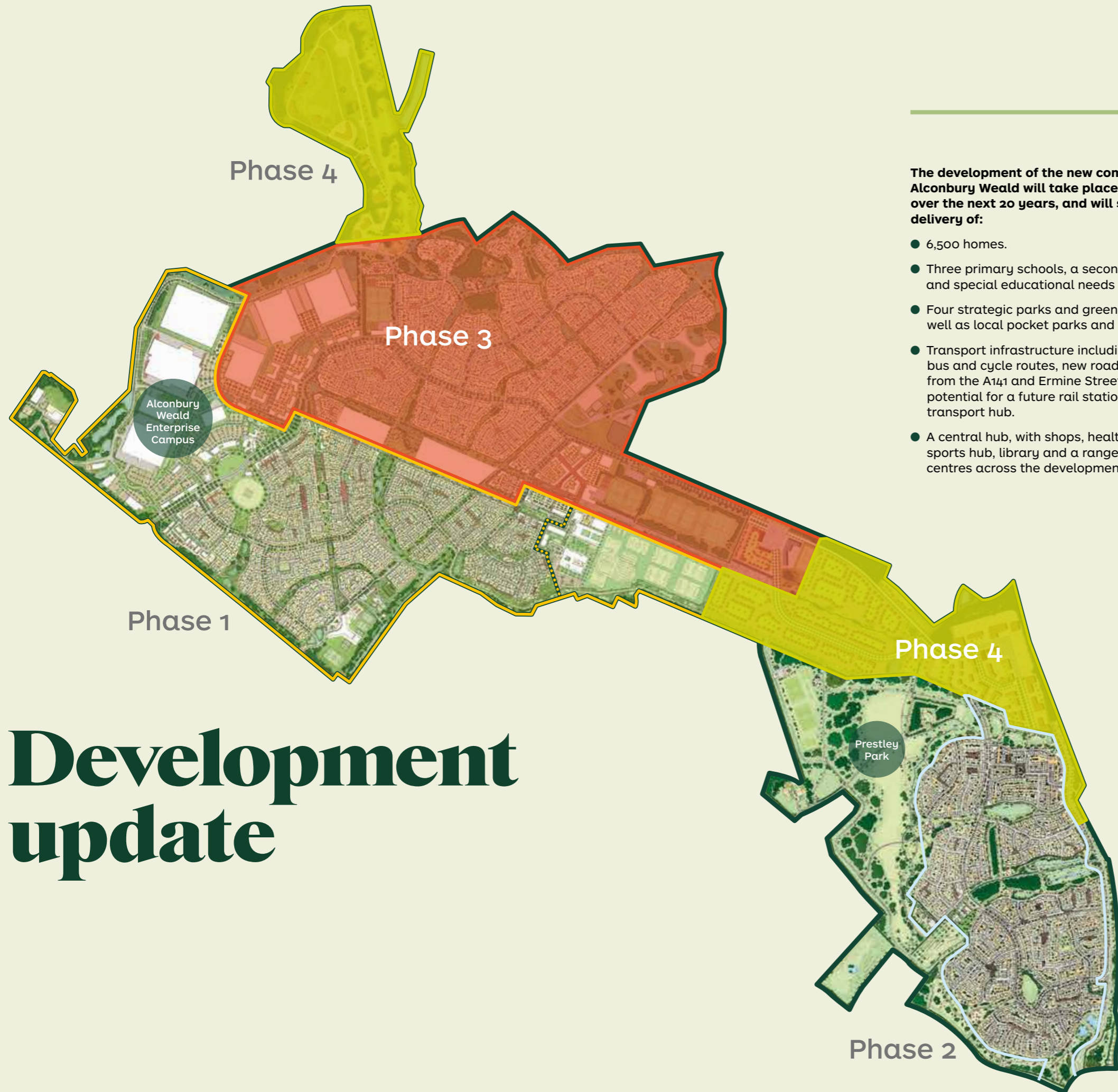
We're also starting to make progress on the Heritage Area coming forward in Phase 3 of the development. In this edition of *Make/News* we share information on some of the listed buildings, why they are important, what will happen to them and how they will be managed as the Heritage Area is developed.

Alconbury Weald has a dynamic community with a wide range of clubs and classes catering for all ages and abilities taking place weekly. We also host a range of events throughout the year supported by our active and enthusiastic Community Association. Recent highlights have included the Food Festival, Heritage Open Day and Scarecrow Festival. We're looking forward to the Christmas Market, which is taking place from midday to 4pm on Saturday, 30 November in The Glade. It promises to be full of festive gifts, goodies and treats. We hope to see you there!

In this edition of the newsletter, we also share the latest news from the nursery, primary school and recently opened special education needs (SEN) school, as well as updates from Alconbury Weald Campus and our latest initiatives to support sustainable travel.

We hope you find this *Make/News* interesting and informative. If you have any queries, or have any ideas for future editions, please let us know.

With best wishes
Becca, Paul and Natalie



Development update

The development of the new community at Alconbury Weald will take place in phases over the next 20 years, and will support the delivery of:

- 6,500 homes.
- Three primary schools, a secondary school and special educational needs school.
- Four strategic parks and green spaces, as well as local pocket parks and green corridors.
- Transport infrastructure including prioritised bus and cycle routes, new road connections from the A141 and Ermine Street, and the potential for a future rail station and transport hub.
- A central hub, with shops, health centre, sports hub, library and a range of community centres across the development.

The first phase of the development is well underway, with over 1,000 homes occupied and a range of facilities including a nursery, primary school, special educational needs (SEN) school, Watch Office Bar and Kitchen (see page 6), food stores, community centre, cricket pitch, community library, multi-use games area, parks, play areas and allotments. It is also home to Alconbury Weald Enterprise Campus, which has over 1 million sq ft of business space, which will be extended in Phase 3.

The next elements coming forward in Phase 1 include a temporary health centre over the Co-op (see page 7), new allotments and a community garden (see page 8) and a secondary school (see page 27).

The second phase will include new homes, open spaces, play areas and a local centre with retail/ café and community space. This phase will be delivered in two stages, with the first 750 homes coming forward to the north of the site. The southern section will continue once the plans for the A141 (Huntingdon outer ring road) are finalised by the Cambridgeshire and Peterborough Combined Authority.

This phase will also bring forward the 150 acre Prestley Park and the southern section of the Boulevard spine road, bus and cycle route, which will provide direct access to Alconbury Weald from the A141.

Phase 3 will bring forward many key amenities for the development including a 'town centre' hub with health centre, community centre and library, shops and services, as well as a 'sports hub'. It will also have large areas of parkland, which will mark the area of the old Cold War runway and connect to a future Heritage Area (see page 15).

Watch Office Bar and Kitchen

Plans are afoot for a bespoke new eatery in Alconbury Weald's historic Watch Office.

The listed Nissen Hut was extensively refurbished in 2020 to bring it up to modern standards whilst preserving the historic fabric of the building.

Formerly used for briefing aircrew before wartime missions, the Watch Office was transformed into a unique place for family, friends, neighbours and colleagues to meet up for drinks and a bite to eat while soaking up the atmosphere.

The Watch Office's new proprietors, David Senior and Vicky Pryce, are busy transforming the cellar, bar area, kitchen and seating area to bring a well-stocked bar, tempting dishes made from locally sourced, seasonal produce and a warm welcome when they open their doors to customers later in the year.

The couple has extensive experience gained from running The White Hart in Alconbury Weston. David will continue in his role as landlord there and Vicky will be bringing a bespoke new offer to Alconbury Weald, with some friendly rivalry already brewing.

Vicky said: "This is such an exciting opportunity and I'm working with a great team to create a new family friendly eatery at the heart of the community. Whether popping in for a coffee or a pint, grabbing a snack or enjoying a hearty meal, everyone will be welcome."

Keep an eye on Alconbury Weald's Facebook and Instagram for updates as they become available!



We brought a pop-up pub to Alconbury Weald during community events this summer and have been greeted by so much enthusiasm and positivity. We can't wait to become part of such a warm and welcoming community!

Vicky Pryce



New healthcare facility moving forward for Alconbury Weald

Plans continue to provide a new healthcare facility, which will provide access to GPs as well as other health and well-being services for residents of Alconbury Weald and the wider community.



The facility is being designed to provide interim space for healthcare ahead of a permanent facility coming forward in the future 'Town Centre' Hub of the development. The new facility is a result of a partnership working between Urban&Civic, NHS Cambridgeshire & Peterborough, North Care Partnership and Alconbury & Brampton Surgeries, and will be based on the first floor of the Co-op building off The Boulevard.

Rebecca Britton, Communities and Partnerships Director for Urban&Civic, said: "The original planning framework had a two-stage process for health delivery for Alconbury Weald, with funding for the expansion of the existing surgery in Alconbury Village to support the first phase of Alconbury Weald, and then the permanent health centre coming forward in a few years' time in the central hub.

"However, we have continued to work closely with local health partners and when they raised the issue about needing space earlier than planned, we identified the opportunity to convert space originally earmarked for offices to create a bespoke facility designed around the services they need for residents.

"We continue to move forward with an agreed design, and are hoping to appoint contractors soon to carry out the planned works. As part of the process we also need to go through a change of use application with the local planning authority for the space above the Co-op, but we hope that everyone will support this important space coming forward for the community. The facility will support the current pressures in the healthcare system and enable Alconbury Weald residents to access services on their doorstep.

"We continue to work with the surgery and all partners to aim for the facility being available in early 2025, alongside continuing work to bring forward the permanent health centre, which will perform a key role in the heart of the development's central hub."

New allotments and community garden

Work is due to start on the new allotments and community garden, located in Trice Way, off Windsor Road, early next year.

The plans, which were developed with feedback from the local community, have been approved by Huntingdonshire District Council and contractors will prepare the area for an official opening in the spring.

The new area has been designed around traditional allotments, with additional space for community gardening and growing projects. The original concept plans included a roofed pergola for community meetings and workshops, a children's gardening zone, storytelling area, a 'berry alley' with trellises, raised communal beds and accessible plots, alongside traditional plots for individual growing.

Following feedback from local residents, the designs were enhanced to include more fruit trees, water butts, a shared compost heap and space for shared storage. In addition, an area will be laid to grass for future expansion to give new residents an opportunity to get involved with the community garden, so it can evolve over time.

The contractors will be working on a range of initiatives to support the development of the community garden. This will include a design competition with students from Ermine Street Church Academy and Prestley Wood Academy, with the winning entries being planted in one of the new raised beds.

Other initiatives taking place during the development of the garden and following its official opening will include wellbeing sessions, wild play pre-school family sessions, citizen science events and family green days. You can find out how to get involved in these events on Alconbury Weald's social media channels as more information becomes available.

Natalie Leigh Brown, Community Development at Alconbury Weald said: "Gardening has a wide range of physical and mental health benefits, and it will be great to see people come together to learn about growing and share expertise and produce in this fantastic new space."



If you are interested in getting involved in the community garden, email natalie.leigh-brown@urbanandcivic.com. To register an interest in an allotment, please email info@encoreestates.co.uk

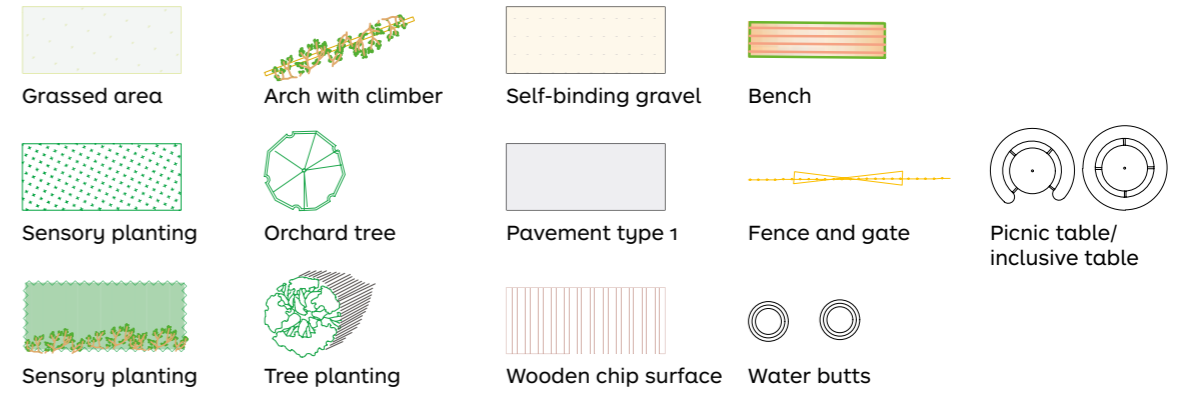
KEY

- 1 A car park with four spaces for allotment users
- 2 An entrance area to the community allotment and private allotment site with a notice board
- 3 The hub area of the community allotment with self-binding surfacing, raised accessible timber planters, tabletop planters and a roofed pergola for community workshops and meeting space
- 4 Raised planting beds on a grassed surface
- 5 Berry Alley with trellis
- 6 A community orchard with a mix of fruit tree planting
- 7 An accessible footpath that runs through the back of the garden allows access to the orchard and Berry Alley
- 8 Compost heap area
- 9 A grassed open space which allows for community activities and outdoor classes
- 10 Raised allotment beds
- 11 Storytelling area surrounded by sensory planting
- 12 Grassed picnic area
- 13 Private allotment plots P1-P32 available in micro and quarter sizes of a standard allotment plot, 25 or 62 square metres. Plots can be combined to receive bigger plot sizes to offer wider lease options
- 14 Double staggered hedgerow planting with wire mesh fence in the middle around the allotment site boundaries



It has been great working with residents to develop a plan for this community space and we're looking forward to seeing that vision become a reality.

Natalie Leigh-Brown Community Development



Green light for next phase of Alconbury Weald

Alconbury Weald's second phase is cleared for take off, with planning consent for 1,500 homes on the Grange Farm area of the development and progress on the delivery of the 150 acre Prestley Park.

Huntingdonshire District Council has granted outline planning consent for up to 1,500 new homes, a local centre with retail and community facilities, open space and play areas. The new homes are coming forward on what was formerly the Grange Farm part of the development, which connects the former airfield to the northwest of Huntingdon. This development will come forward as part of the second phase of Alconbury Weald, along with a new park for the area — Prestley Park, which has also received framework approval through its own planning process.

The decision comes as the next phase of work is due to start on the southern end of the development's spinal 'Boulevard' which provides the main road, cycle and bus links through the development: the route will run from the A141 just south of the railway bridge, through the heart of the development, and connect to the existing Gateway entrance from the northern Ermine Street entrance to the development by the A1/A1307 interchange (see page 12 for more information).

The second phase of Alconbury Weald will be delivered in two stages, with the first 750 homes coming forward to the north of the site. The southern section will continue once the plans for the A141 (Huntingdon's outer ring road) are finalised by the Cambridgeshire and Peterborough Combined Authority.

The team will now develop the detailed designs for the homes coming forward, with plans to submit further applications in spring 2025, with first homes being available in early 2026.

Earthworks and early infrastructure work will happen across both the residential area of Phase 2 and Prestley Park, which will enable the first tree planting and work to establish species rich grassland within the park to be rolled out in 2025.

Joe Dawson, Project Director for Urban&Civic said: "We're really pleased to start moving forward with this exciting next phase of Alconbury Weald. The new homes in this area of the development will have a lovely setting, just next to Prestley Park, and will be well connected to both Alconbury Weald and Huntingdon, through the road, cycle and bus connections we are putting in. This phase will open up a new southern Gateway for Alconbury Weald, and provide additional facilities for residents and the wider local area."

The application for these homes came forward as an Outline Application, and these homes increase the scale of the original 5,000 homes consented for Alconbury Weald to 6,500. As a result of that, the consent comes with a series of additional planning obligations and a Section 106 legal agreement to provide additional funding and facilities to support the extra homes. This includes £3m investment in transport infrastructure and support to continue the existing active travel programme of the development, as well as additional funding towards the planned schools and health provision on site to expand their capacity.

The development will also deliver a net gain in biodiversity of 25% in habitat units and 150% in hedgerow units — protecting and enhancing the existing habitat features within the heavily farmed area. The overall design brings green spaces and corridors into the housing areas, to extend the parkland setting close to people's doors.

The team is now developing a programme of site preparation works to put in place the infrastructure needed for the homes.



Southern Gateway opening link to Huntingdon

The next phase of work will start on the delivery of the Southern Gateway to Alconbury Weald in the coming weeks. The new Gateway will enable the development to have an access directly on to the A141 — just south of the railway bridge.

The works will include establishing the southern end of The Boulevard, which forms the primary spine route through the whole development for cars, buses, cyclists and pedestrians. In time this will run from the current Ermine Street entrance, through the first phase and north of the runway (the future Runway Park), and through the centre of the development, before coming through the former Grange Farm area to connect to the A141. The southern end of the road will be delivered in phases, and the central section will be completed as part of works to bring forward the central hub of the development.

The majority of the work to create the southern end of the Boulevard will take place onsite and the connection to the existing infrastructure will happen when this work is complete — estimated to be in late summer 2025. Some early landscaping work and remediation has already been undertaken, along with archaeological investigations along the route.

The work will involve the removal of some of the trees and hedges along the A141, and the team has been working with ecologists to minimise the impact of the work, and to ensure the new route enables double the amount of hedgerow to be planted within the new scheme, alongside over 300 trees being planted along the southern section of the new route. Logs, bark and branches from the hedgerow removed will be repurposed to create homes for wildlife and maintain biodiversity in the new green spaces being created alongside the road and within the parkland areas coming forward in Prestley Park.

Rebecca Britton said: “This is a long stretch of road, so it will be delivered in phases over the coming years before it fully connects through the site, but this first stretch will support both the new homes and Prestley Park coming forward in the second phase of Alconbury Weald, and ultimately be the core connection through our final phases.”



Archaeological works are also taking place. Please stick to the footpaths and follow any warning signs around trial trenching and dig sites, which are in place to ensure the safety to those working on archaeological investigations as well as those walking in the area.



This work will be a great way of connecting Alconbury Weald and our residents more directly to Huntingdon. It will also make a big difference to traffic along Ermine Street in the Stukeleys when, in time, it connects up and provides a more direct route for people to access Alconbury Weald.

Rebecca Britton Urban&Civic



Heritage Area Action Plan

Alconbury Weald has a rich history that covers thousands of years of people living, working and enjoying this unique part of Huntingdonshire. This heritage is reflected throughout the development, with the past playing a key role in shaping the future, so new residents and visitors can engage with the history around them.

Alconbury Weald's more recent military history, and particularly its intelligence and reconnaissance role during the Cold War, will be the focus of the Heritage Area coming forward in Phase 3 of the development.

We caught up with Rebecca Britton, Regional Director for Urban&Civic and keen amateur historian, to find out more about the plans for the Heritage Area.

What is in the Heritage Area?

The Heritage Area contains some unique buildings that reflect the exclusive role of the historic RAF Alconbury as the only permanent UK base for the Lockheed TR-1 Dragonlady (TR-1) spy plane. These buildings are listed to Grade II* to denote their national significance and include:

- Building 210: The Avionics Building

The Avionics Building is unique to RAF Alconbury. It is a substantial structure, partially below ground and sitting beneath a thick concrete and cement cap, which was designed to absorb the impact of a direct missile strike.

The building provided secure space to process and interpret surveillance footage obtained during reconnaissance missions of the TR-1s. This is reflected in the series of sealed decontamination points within the separate entrances for vehicles and pedestrians.

The rooms within the building are likely to have been filled with computers used to download and analyse data. The space would also have been used to maintain the plane's sensitive reconnaissance, radar and navigational equipment.

- Four Series Hangars: Hardened Aircraft Shelters (Buildings 4109, 4110, 4111 and 4112)

Two more of these structures were recently listed alongside the two already defined in the Outline Planning for Alconbury Weald. They are a specially designed adaptation of the standard NATO Hardened Aircraft Shelter, which was built to provide bomb-proof accommodation for the TR-1 spy planes, which had a 103ft wingspan.

Built between 1984 and 1989, the buildings are made up of a curved, corrugated steel framework that had reinforced concrete poured onto it, enormous steel and concrete doors with a latticework structure for their movement, as well as a blast-protected side door and substantial ventilation along the apex of the roof. Inside, the buildings house a large, two storey power and operations block constructed of steel and concrete, allowing the hangars to be operated independently in case of external nuclear or biological contamination.

The four buildings are set out in pairs facing each other: designed to limit the danger of explosions damaging multiple structures. Unusually for the flat airfield, the area around the structures is also scattered with landscaped hillocks that may have been used for blast protection or to provide some camouflage, but as part of this area, will help provide a parkland setting for the future Heritage Area.

An additional Refuelling Shelter (Building 4000) is also listed as Grade II.



Indicative plan



Why is it so important?

RAF Alconbury had a unique role during the Cold War; sending reconnaissance aircraft to take images and bring them back for intelligence analysis. The scale and design of the infrastructure to do this is unique in the UK. It reflects the hotting up of the Cold War in the 1980s and the work done to ensure that reconnaissance could continue even in the event of chemical, nuclear or biological warfare. It is hugely important that this important part of history is remembered and can continue to keep people informed and engaged about both the history and nature of global politics.

Many of the core intelligence tasks carried out at RAF Alconbury drew from the role of the Pathfinder squadrons locally during the Second World War, and indeed continues today in the role of American and British military intelligence across the local area.

What will happen to these historic buildings?

The future plans for Alconbury Weald include maintaining the listed buildings, within the setting of the Heritage Area, and ensuring we develop future uses for them that provide a sustainable future. Urban&Civic recently submitted a framework for how the Heritage Area will come forward. This includes putting in place better landscape and water management to fit in with the wider approach across the development; replacing the aged infrastructure and utilities with modern power network — which will single handedly produce a significant reduction to the area's carbon footprint; and developing a programme to start to open up the area to wider public access.

A key part of this is to explore uses that could come forward in the buildings to provide community and heritage uses, as well as commercial income to support the ongoing maintenance of the area. Current uses set out in the plan that will require further exploration include film, theatre and studio use; indoor sports and leisure uses; jobs skills and training, for construction and engineering sectors; as well as a commitment to have a Heritage Centre within the buildings to support ongoing engagement with residents, visitors and students of the Cold War.

The work is supported by local heritage partners and a local Heritage Group who work with Urban&Civic to guide the approach.

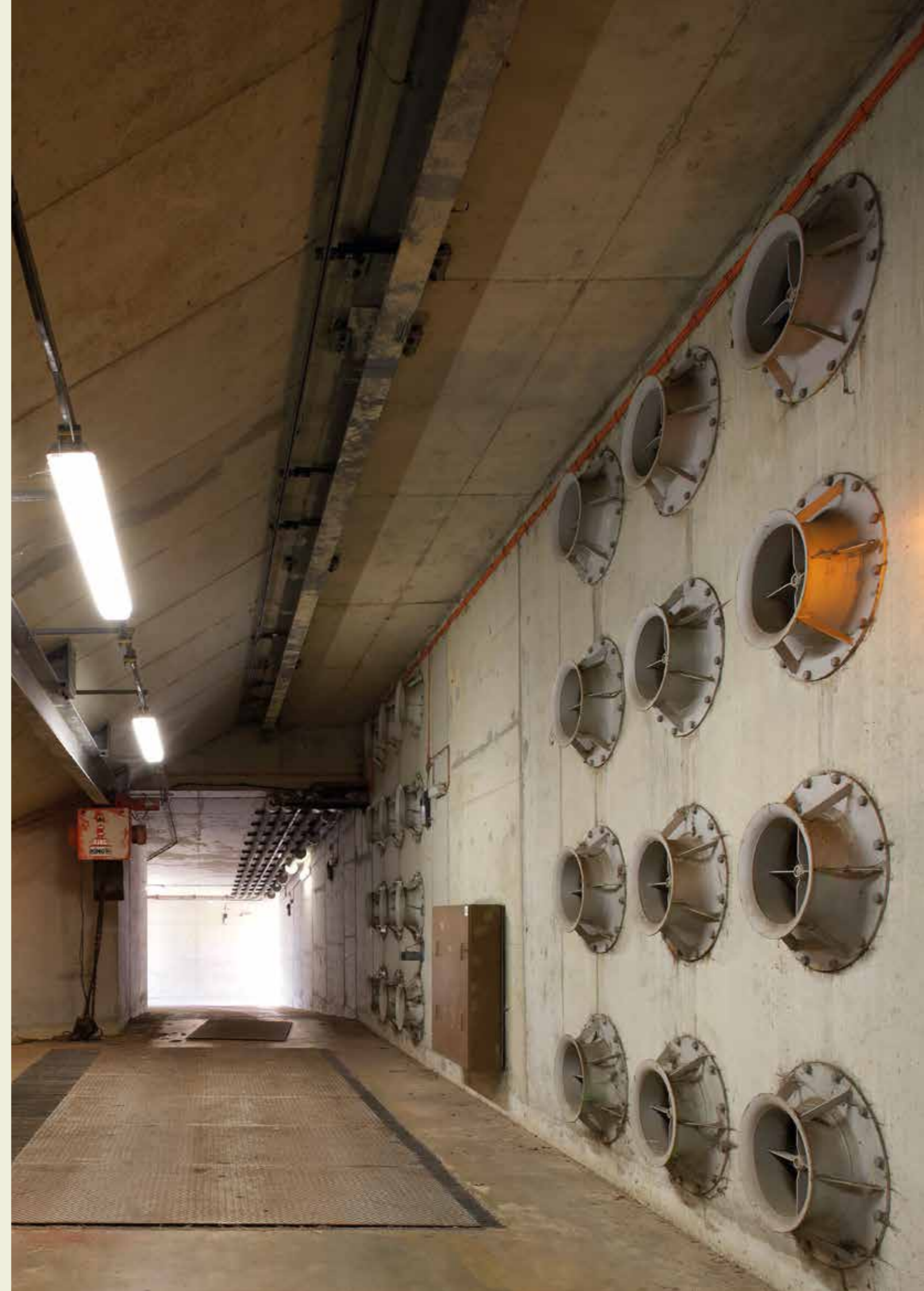
How will they be managed?

The management will depend on the future uses, but the Heritage Area has its own funding and management structure as a separate part of Alconbury Weald, which ensures maintenance work is carried out as the future plans are developed. The framework plans commit to setting up a long-term governance structure to manage the Heritage Area independent of the wider development in the long term, to ensure it has a self-sustaining future.

When will the area be opened up?

The whole of the Heritage Area covers 17 acres and will open up from the southern side, as the central hub of Alconbury Weald develops, starting with the area around The Avionics Building (Building 210). Access will be limited for some time, as construction traffic will be routed around the area for the build out of the third phase of Alconbury Weald. In the meantime, the team is working hard to ensure key buildings and the wider area are opened up for key events in the short term, and then areas will gradually be opened in phases as the development rolls out.

You can find out more about the military heritage of the site from the Airfield Research Group www.airfieldresearchgroup.org.uk. If you are interested in finding out more about local history, you can join the Alconbury Weald and Stukeleys Heritage Group. For more information, email michaelgmonk@hotmail.com.



Ways to live at Alconbury Weald

With a wide range of apartments and houses coming forward, there are lots of ways for people to make Alconbury Weald their home. This includes buying, Shared Ownership, Rent to Buy, renting and affordable rent. In this edition, we focus on shared ownership.

About Shared Ownership

The Shared Ownership homes at Alconbury Weald are built by various housebuilders, but the sales process is managed by Longhurst Group, Cross Key Homes and Domovo Homes.

These companies specialise in supporting buyers through the process and in their early years when the property is part rented.

Shared Ownership is an affordable, flexible option of purchasing a home and a great way to get a foot on the property ladder if you're currently unable to buy a property outright on the open market.

Shared Ownership is a Government-funded Low Cost Home Ownership (LCHO) product. It allows you to purchase a share in a property, that's affordable to you and pay a subsidised rent for the unsold equity, which remains in the ownership of the company selling the property until you own your home outright.

Initial shares can be brought in stages and range from 10 percent up to 75 percent depending on the lease. When the time's right for you, you can staircase and buy additional shares in your home and if your lease allows you can purchase the Freehold interest to take full ownership.

Find out more by visiting:
www.longhurst-group.org.uk
www.crosskeyhomes.co.uk and
www.domovohomes.co.uk

Shared Ownership has allowed us to buy our forever home a lot quicker than if we'd bought on the regular open market. It was kind of a no-brainer and probably the best thing we've ever done.

Longhurst Group customer



Example: Property value £200,000

<p>Buy 50%</p> <p>You purchase a 45% share of the property, plus a 5% cash deposit</p> <p>£95,000 45% mortgage</p> <p>£5,000 5% cash deposit</p>	<p>Rent 50%</p> <p>Affordable rent on the remaining share*</p>
---	---

*Monthly rental charges include building insurance and management company charges



To find out more about the wide range of homes and ways to live at Alconbury Weald, visit www.alconbury-weald.co.uk/living



Meet the housebuilders



Housebuilder showhomes

- 1** **Campbell Buchanan George**
 01480 220535
 Senliz Road, Alconbury Weald
 Huntingdon PE28 4LY
Open Thurs–Mon 10am–5pm.
- 2** **Hopkins Homes**
 01480 435108
 Geldart Way, Alconbury Weald
 Huntingdon PE28 4LZ
Open Thurs–Mon 10am–5pm.
 Closed on Friday at 4.30pm
- 3** **Barratt Homes**
 Opening Spring 2025
- H** **The Hawkings**
 0300 1246773
info@thehawkings.co.uk
- 4** **David Wilson Homes**
 0333 355 8485
 Senliz Road, Alconbury Weald
 Huntingdon PE28 4LY
Open Thurs–Sun 10am–5.30pm,
 Mon 12.30–5.30pm
- 5** **Redrow**
 01480 710086
 Senliz Road, Alconbury Weald
 Huntingdon PE28 4LY
Open Fri–Weds 10am–5.30pm
 and Thurs midday–5.30pm
- 6** **Morris Homes**
 07484 040412
 142–146 Senliz Road, Alconbury Weald,
 Huntingdon PE28 4FR
Open Thurs–Mon 10.30am–5.30pm

Alconbury Weald hosts a wide range of clubs and classes that cater for all ages and abilities. From play groups and dance classes for little ones, to youth club for young people and a range of fitness classes and social clubs for adults, there is something for everyone.

www.alconbury-weald.co.uk/whats-on

Weekly activities

<p style="writing-mode: vertical-rl; transform: rotate(180deg);">The Pavilion</p>	<p>Monday</p> <p>Movement with Mindfulness Gentle Pilates 10.00-11.00 helenvandecker@hotmail.com</p> <p>Stars on Stage 17:15-17:45 Ballet Years 1&2 17:45-18:15 Key Stage 2 Ballet starsonstage.com</p> <p>Pregnancy Fitness: Pilates 18.45-19:35</p> <p>Fitness: Pilates 19.40-20.30 taniafitness.com</p>	<p>Tuesday</p> <p>Pilates with Zara 09.00-10.00</p> <p>Mums & Tots Fitness 10.30-11:15 taniafitness.com</p> <p>Tuesday Club, Friendship group for adults 13:30-15:00</p> <p>Hot Shots: Inclusive Tennis for 3-12 gstevensonsport@hotmail.com</p> <p>Yoga with Anushree 18.00-19.00 07440 326521</p>	<p>Wednesday</p> <p>Roots and Wings 0-4 year olds playgroup with parents/carers 10.00-11.30 alconburywealdchurch.org.uk</p> <p>Brownies and Guides 18-00-20.30 girlguiding.org.uk</p>	<p>Thursday</p> <p>Mums & Tots Fitness 10.30-11.15 taniafitness.com</p> <p>Stars on Stage 15:15-15:45 Pre School Ballet</p> <p>15:45-16:15 Ballet - Reception and Year 1</p> <p>16:15-16:45 Modern Jazz Reception & Year 1</p> <p>16:45-17:15 Modern Jazz Years 2,3,4.</p> <p>17:15-18:00 Modern Jazz Years 5,6,7 starsonstage.com</p>	<p>Friday</p> <p>RightStart 3 Strength and Balance 9.00-10.00 Book via the One Leisure app or call 01480 388111</p> <p>Alconbury Weald Youth Group 2nd Friday of Month 18.00-19.15: 8-11 year olds</p> <p>19.30-20.30: 11-16 year olds</p> <p>Cancer Support Group 1st Friday of Month 4.30-6.30 identifycancergroup@gmail.com</p>	<p>Saturday</p> <p>Boxercise 7.30-8.30 elas_personaltraining@yahoo.co.uk</p> <p>Morning Yoga 9.00-10.00 07440 326521</p>	<p>Sunday</p> <p>Sawtry and Alconbury Weald Cricket Club Summer months sawtrycc@yahoo.com</p> <p>The Hall is available for private hire contact: info@alconbury-weald.co.uk</p>
	<p>Monday</p> <p>Walking Group 12.30 FREE Meet outside Swynford Stores</p> <p>Spotlight Theatre 19.00, The Club spotlight-theatre.co.uk</p> <p>Book Club 1st Monday of the Month FREE info@alconbury-weald.co.uk</p>	<p>Tuesday</p> <p>Spotlight Theatre 19.00, The Club spotlight-theatre.co.uk</p>		<p>Thursday</p> <p>Walking Group FREE 7pm Meet Outside Swynford Stores</p>	<p>Friday</p> <p>Rhymetime or Story Fun 10.00 FREE For 0-4 year olds. The Club</p> <p>Coffee Morning 11.00 FREE. The Club Second Friday of the month</p>	<p>Saturday</p> <p>Tennis FREE 8-11am Multi Use Games Area Email for more info info@alconbury-weald.co.uk</p>	<p>Sunday</p> <p>Tennis FREE 8-11am Multi Use Games Area Email for more info info@alconbury-weald.co.uk</p>
	<p>Ermine Street Church Academy</p>	<p>Tuesday</p> <p>Alconbury Weald Netball Club 19.00-20.30 7netballacademy@gmail.com New members welcome</p>		<p>Saturday</p> <p>Alconbury Weald Performing Arts 9.00-13.45 Various classes for ages 3-16 awperformingarts.com</p>			



Events

Food Festival

This year's Alconbury Weald Food Festival surpassed expectations with over 1,500 visitors enjoying a sunny day filled with delicious food, live entertainment and family-friendly activities, creating a fantastic community vibe.

The Food Festival, organised in partnership with Off The Beaten Truck, featured a diverse array of food trucks offering a wide variety of cuisines, from wood-fired pizza to Asian steamed bao buns and a range of decadent desserts. A variety of beverages were also available from a coffee kiosk and pop-up bar, and a food market showcasing fresh produce from local suppliers gave visitors a taste of the best that our region has to offer.

In addition to the culinary delights, festival goers were treated to the artistic talents of a local illustrator, who drew personalised portraits that guests could take home as a unique memento. Children also enjoyed bouncing on a giant trampoline, while families and friends relaxed on picnic benches and rugs they had brought along.

A highlight of the event was the debut performance of the resident band, The Weald Thing, whose songs had everyone tapping their feet. The live music added an extra layer of enjoyment to the day, creating a vibrant and energetic backdrop to the festivities.



Events

Heritage Open Day

Residents, family, friends and visitors flocked to Alconbury Weald on the first Saturday in September to discover more about the development's fascinating past and enjoy a community celebration with stalls, food trucks, lawn games and live music.

Alconbury Weald's history stretches back through the millennia and this year's exhibition focused on the Iron Age and Roman periods, with artefacts on display from the most recent excavations on site.

A highlight of the day was a talk from archaeologist Christopher Thatcher, who was involved with the dig featured in an episode of BBC's *Digging for Britain* earlier this year. Relatively little is known about the later Roman period, during the fall of the Roman Empire and the start of the Dark Ages, but recent finds at Alconbury Weald are providing a rare insight into society during this turbulent time in Britain's history.

People interested in Alconbury Weald's more recent military history enjoyed a presentation on the former airfield from the Airfield Research Group. A vintage Dews bus also took visitors for a guided tour of the Avionic building, the Cold War military bunker that played a key role gathering intelligence from the TR1 reconnaissance aircraft.

In parallel, Alconbury Weald's Community Association organised a family fun day with a range of stalls selling gifts, flowers, dog treats, cakes, bakes and snacks, as well as food trucks offering a range of culinary delights to tempt the taste buds. A range of family-friendly entertainment was also available throughout the day, including face painting, lawn games, a silent disco and an eclectic mix of hits from Alconbury Weald's resident band.

Representatives from the Military Police and Magpas Air Ambulance also attended to meet the community and explain more about their vital roles and responsibilities.



Wild Weald

During the October half term, a team from the Wildlife Trust Beds, Cambs and Northants held a series of pond dipping sessions and nature craft activities for children and their parents/carers at Carnaile Pond and the school plaza.

As well as discovering some of the fascinating wildlife that lives in and on the water and learning about some of the ways they can help nature thrive in their back garden, the children enjoyed colouring in and creating bug houses to take home.



Scarecrow Festival

September saw the creative talents of Alconbury Weald's residents displayed through the medium of straw during the annual Scarecrow Festival.

Highlights from the trail included a snowman, a gingerbread man, the hungry caterpillar, Postman Pat, Harry Potter, Moana, Lightning McQueen and Mater from Cars, Tom Daley, Minecraft characters, Humpty Dumpty, a ghost, a giant spider, a giraffe.

The winners, which were voted for by residents through the Facebook page, were Moana (first), Dino (second) and Lightning McQueen and Mater from Cars (third).

Halloweald

This year, Alconbury Weald celebrated Halloween in style, with residents snapping up the 50 free pumpkins that were kindly donated by Co-op and scattered around the residential area. Working their creative magic to carve some fantastic jack o'lanterns, the pumpkins formed the centrepiece of many families' spooky decorations.

Alconbury Weald's Community Association produced a Trick-or-Treat Trail map to help local children dressed in costumes ranging from cute to creepy to track down the best decorated homes at Halloween, so they could be rewarded for their efforts.

Huntingdon Child and Family Centre also held a Halloween themed craft session as part of the festivities, with children having spooky crafts, messy play and lots of fun.

With pumpkins aglow, treats aplenty, and crafts galore, Halloweald brought friends, family and neighbours together and left everyone looking forward to next year's celebration!

Remembrance Sunday

Each year, the Alconbury Weald community joins Rev'd Rob Paddison from Alconbury Weald Church and representatives from the RAF and USAF to honour those who served at the former airfield during its military past. This year's service took place at Watch Office Green on Sunday, 10 November 2024.



Christmas Market

This year's Christmas Market is being organised by Alconbury Weald Community Association and will take place from midday to 4pm on Saturday, 30 November on The Glade plaza.

Come along to stock up on an array of festive goodies including Christmas gifts, toys, food and drink.



Education is a key priority for Alconbury Weald, with schools designed to provide for every stage of learning, all in state-of-the-art buildings inspired by Alconbury Weald's rich heritage and community ethos.

Jemima House Day Nursery

Based in Ermine Street Church Academy, Jemima House Day Nursery offers flexible childcare (from birth to five years old) in a well-equipped, safe and stimulating environment that provides a wealth of learning opportunities.

During the summer, the nursery had a visit by Martine and her guide dog, which the children found very exciting! As well as the fun of meeting Willow, the golden labrador, the children found out about all the ways a guide dog supports its owner to lead an active and independent life.

Following the Olympics, the children had lots of fun making medals, which they displayed in their windows each week to represent the medals won by the UK.

The nursery held a celebratory event for children leaving for primary school, with a mini fayre and activities for the children and their parents to mark this important transition into the next stage of their education.

September was Childhood Cancer Month, and the nursery held a fundraising event again this year to celebrate their superhero child who survived cancer as a baby. As well as a bake sale and selling gold ribbons, the children took part in 'Wear it Gold Day' to raise money for the Children's Cancer and Leukaemia Group.

The children also took part in Alconbury Weald's Scarecrow Festival again this year, with a very large Incy Wincy Spider!

The nursery is continuing to develop its outside space and now has some lovely new planters to surround the grass area, creating a designated space for quieter play.

To find out more about Jemima House Nursery, visit: www.jemima-house.co.uk



Ermine Street Church Academy

Part of the Diocese of Ely Multi Academy Trust (DEMAT), in partnership with the Methodist Family of Schools, Ermine Street Church Academy (ESCA) is Alconbury Weald's first primary school, with wrap-around care provision by Premier Education at The Hangar Club.

ESCA is now two form entry in all but one year group and the completion of the third wing of its Y-shaped building in September means it has capacity to grow to three form entry in all year groups over time.

Following the summer break, ESCA welcomed 317 students for the new academic year and Ayellet McDonnell, headteacher of ESCA, shared some thoughts and highlights from the first weeks back.

"We had a great start to the school year and our reception children are settling in well and are keen to return. One asked if they could go to school on a Saturday and was very disappointed to discover we have weekends off!

"It was also lovely to see our returning pupils, who were full of tales from their summer holidays and refreshed and eager to learn.

"As well as lots of enthusiastic participation in lessons, the children have enjoyed a range of events with the Teddy Bear Picnic, Read with your Grandparent Day, Harvest Festival and a Phonics workshop proving really popular. We were also lucky enough to be visited by the Police who arrived in their cars, vans and even a boat! The children were given the chance to try on Police uniform, to look inside the vehicles and ask lots of great questions.

"We have lots to look forward to in November and December with Odd Socks Day, Children in Need, Christingle Evening, Friends of ESCA's Christmas Fair and our Reception's Nativity Play."

To find out more about ESCA, visit www.erminestreet.demat.org.uk



Prestley Wood Academy

Prestley Wood Academy, Alconbury Weald's Special Educational Needs (SEN) School, welcomed its first students in early September. We caught up with headteacher Caroline Place to see how things are going and what the team has been up to since the last edition of *Make/News*.

Getting the school ready

It has been fantastic to watch the school building coming together. It's an amazing space and we're really excited to be able to establish a new school here.

Once the construction was complete, we had a busy summer transforming the internal space to make it a safe and welcoming environment for our new cohorts. The specialist areas, including soft play and trampoline room, have been fully kitted out and by the end of August, when we'd put resources on the walls and added the finishing touches, it began to feel a bit more like a school.

A school, however, is so much more than a building.



Forming a community

We only began to feel like a school once our community was in and we started to get to know each other and build trust. Trust is really important for any community. For our young people who might not have had the best experience elsewhere — or haven't had exactly what they need before, or didn't have access to a specialist environment, staff or similar peers — it can be hard for them to trust unfamiliar people.

The priority for our first few weeks was getting to know each other and discovering each other's quirks. This has helped us work out how to make our individuals feel comfortable, so we can build learning behaviours to make lots of progress.

It's taken a little while for everyone to settle in, but there's a real buzz at the start of the school day and it's lovely to walk in and be greeted by so many smiles and so much enthusiasm. One of our amazing students has already established a routine of sharing a joke with the office and our staff as he enters the school every day — such special moments make it a joy to work in our school already! So, we've bought a massive joke book for reception and are enjoying our daily joke.

We're really starting to feel like a school community and can't wait to see what the rest of the year brings.

Life skills and community links

Being part of the wider Alconbury Weald community is also really important. We're keen for our pupils to learn important life skills and being part of an active community is a great way to help build confidence.

As part of the curriculum, our Key Stage 3 and 4 students will be looking at how businesses work. As part of this, they will be tasked with researching products, looking at profit margins and selling the products they make at the local market on The Glade plaza. We're hoping to have our first stall at the Christmas Market!



Work experience is also important, and we're hoping to form connections with local businesses that can offer placements during the summer term. Teaching assistants will accompany students to provide additional support during their placement.

We're also interested to hear from individuals and businesses that can provide talks, tours and other opportunities for our young people. We're looking forward to attending Magpas Air Ambulance's tree planting event this year and to visiting the facility for first aid demonstrations and to learn other important lifesaving skills.

We have extensive grounds, and it would be lovely to create a community garden with support for local volunteers. We're just starting to pull together some ideas and will share more information about what we have planned and how you can get involved in the next edition of *Make/News*.

Community facilities

The school also has a range of facilities that are available to hire. This includes the school hall, hydro pool for physiotherapy use and the MUGA, which has markings for netball, basketball and football.

Career opportunities

The school is currently fully staffed with teachers and teaching assistants, however, there will be more opportunities coming up for a January start. If you are interested, please keep an eye on the EPM website — www.epm.co.uk/careers — for details when they become available.

We are however currently recruiting for an Assistant Site Manager to support management of the buildings, site security and general maintenance. Find out more and apply at www.indeed.co.uk

Get in touch

If you have any queries about the Assistant Site Manager role, the community facilities available or you would like to support our life skills programme, please get in touch by emailing office@prestleywood.org.uk or call 01480 710036.

Secondary school update

A new secondary school with sports facilities, pitches, and other amenities will join Prestley Wood Academy to form the Education Campus at the heart of the development.

Cambridgeshire County Council and its team of consultants are finalising the detailed designs and delivery plan for Alconbury Weald's Secondary School. The school is due to open in September 2027 subject to final approvals by the Department for Education and pupil numbers.

See the next edition of *Make/News* for more detailed designs and the timeline for delivery.

Work experience

In late July, Year 10 students from Sawtry Village Academy school in Huntingdonshire completed a unique and engaging work experience programme that immersed them in the dynamic world of the built environment and introduced them to the diverse careers involved in creating a new community like Alconbury Weald.



The project team from Urban&Civic engaged the students in the challenges and opportunities to design, plan, deliver and maintain a large-scale development. This included a bridge building exercise, interactive landscape planning and project management sessions, tours of the Cold War Avionics Building and Magpas Air Ambulance, and a visit to an active archaeology dig.

A stand out moment for the students was the challenge of building a bridge strong enough to roll a tennis ball over using dried spaghetti and marshmallows. This activity not only fostered teamwork but demonstrated the value of maths and physics learnt at school for future careers in design, engineering and project management.

Natalie Leigh Brown said: “The work experience programme has been an eye-opener, providing the student with an insight into how the subjects they are studying at GCSE can be applied to real life scenarios and providing a better understanding of the various jobs and careers that go into making a place like Alconbury Weald come to life.



Engaging the next generation and introducing them to the complexities of what we do was incredibly rewarding, and we were impressed by their enthusiasm and ingenuity. We wish the students every success in the future and look forward to working with some of them in their future careers.

Natalie Leigh-Brown Urban&Civic

Huntingdonshire's wider growth plans

Whilst master developer Urban&Civic is focused on creating the best possible development for everyone living, working and visiting Alconbury Weald, Huntingdonshire District Council is looking at the district-wide vision for the next 15–20 years and is encouraging residents to have their say during its consultation on the Local Plan.

Local Plan

The Local Plan is crucial to the future development of Huntingdonshire and influences policies that help shape housing, infrastructure and employment, while addressing vital issues like climate change, affordability and flooding. The aim is to achieve sustainable development that meets today's needs without compromising the needs of future generations.

Michelle Sacks, Chief Executive for Huntingdonshire District Council, said: “The Local Plan is hugely important to the lives of everybody within the district because it sets the vision and ambition to support thriving communities for the next 15–20 years.

“You might think it's not important to you as you like where you live now, however, this is about future generations — your children and your grandchildren — as well as about your friends and colleagues and how we all live together in the district.

“Your responses will also help prioritise investment opportunities so we can continue to support thriving and connected communities and economies. So please just take a few minutes to complete the survey and let us know how you would like to see Huntingdonshire develop in the coming years.”

Find out more and respond by 27 November 2024:

www.letstalkhuntingdonshire.net/hub-page/local-plan

Future Places

The Local Plan will also help achieve the goals set out in Huntingdonshire's Future Places Strategy. This document sets out the 30-year vision for how residents, communities, stakeholders and partners can work together to ensure a brighter future for Huntingdonshire, in which everyone can thrive.

Michelle Sacks explained: “By linking together the Local Plan with the five Journeys in our Future Places Strategy — pride in place, inclusive economy, embedded health, the environment and improved connectivity — we can take a holistic approach to placemaking with residents at the very heart of decisions and actions in the years ahead.”

Find out more about Future Places at www.letstalkhuntingdonshire.net/hub-page/the-place-strategy



The story behind water

Every drop goes through a lot

From that first morning cuppa to a relaxing shower at the end of the day and everything in between, life revolves around water.

Most of us don't think about where our water comes from, but since only 1% of the world's water is drinkable, every drop goes through a lot before getting to you.

Water starts its journey as rainfall. Anglian Water borrow it from the environment and collect it from different sources including reservoirs like Grafham Water, as well as rivers and even deep underground. Anglian Water then filter, treat and carry out thousands of tests every day, to bring you safe, clean drinking water, ready for you to turn on the tap.

As we live in the driest region in the UK, with a growing population, it's important to monitor our water resources closely, to keep taps flowing and toilets flushing now and long into the future.

That's why it's important to save and protect every drop.

Top tips to save water at home...

46% of people think their household uses under 20 litres a day. The average person uses 136 litres of water a day!

- Showering for just one minute less can save over 28,000 litres: that's over £100 in energy and water bills every year.
- Turning off your tap while brushing your teeth or washing your face can save over 2 full buckets of water per day.
- Waiting to put the washing on until you have a full load could save around 10 litres of water every wash.

To find out more about the story of water, meet the teams that keep your taps flowing and explore how you can help love every drop, please visit:

www.anglianwater.co.uk/storybehindwater



Turning off your tap while brushing your teeth or washing your face can save over 2 full buckets of water per day.

Anglian Water Top Tip

Sustainable water management

At Alconbury Weald



Keeping the sewers clear

After flushing the toilet or rinsing the dishes, Anglian Water take away wastewater through thousands of kilometres of sewer pipes, so it can be treated, cleaned and recycled back to nature.

Blockages in the pipes are the most common cause of sewer flooding in homes and communities. In our region, the teams at Anglian Water clear one sewer blockage every 15 minutes, but 80% of are easily avoidable.

Did you know...

- The amount of rubbish like used wipes, nappies, period products and more, that are removed from the sewers each year, would stack up to be almost as high as Mount Everest!

You can help keep the sewer pipes clear, prevent bad smells and reduce the risk of sewer flooding in your home by making a couple of small swaps.

By just binning your cooking fats, oils and grease and only flushing the 3 Ps (Pee, Poo and Paper), you can save money on unwanted plumbing bills, protect your pipes and homes.

Explore more tips to keep your pipes clear and how Anglian Water are protecting the sewers, environment and communities at www.anglianwater.co.uk/keeping-the-sewers-clear

Contact Anglian Water

You can report issues or check for updates near you on the website: www.anglianwater.co.uk/your-local-area/report-an-issue

All new developments need a plan to manage surface water — now and in the future — with consideration given to a variety of extreme weather scenarios including a 1-in-100-year storm, flood or rainfall event as well as climate change.

Alconbury Weald uses ponds, watercourses and below ground storage as the foundation of its sustainable strategy to manage water: not just to support the new community at Alconbury Weald to be climate resilient, but to support the surrounding area to be more resilient to flooding.

Balancing ponds along with swales (shallow channels that collect water and remove pollution from it), ditches and drains form the main Sustainable Drainage System (SuDS) features at Alconbury Weald.

The SuDS also have positive environmental benefits. As the surface water passes through the system, it is being cleaned and the quality of the water is being improved. They also create habitats for wildlife and enhance biodiversity.

Reducing the amount of water used by new homes coming forward is one of Urban&Civic's sustainability focuses. This includes strategic infrastructure and working with housebuilders on low water use fittings and appliances.

We are also starting to work with residents on thinking about their own household consumption and equipping them with information and resources to make smart water choices. Ultimately we want to decrease use of water to about 90 litres per person per day, and are working with Anglian Water and partners from the Project Zero campaign to support water smart homes and communities.

Latest news

Alconbury Weald Enterprise Campus is a dynamic place for businesses of all shapes and sizes — whether starting up, relocating or expanding — companies can rent flexible space for research and development, production and office accommodation in one of the Incubator buildings, or design and build bespoke facilities to meet their specific requirements, supported by the design, development and project teams at Urban&Civic.

MM Flowers buys flower grower

Alconbury Weald based MM Investment Holdings (MM), parent company of MM Flowers, the biggest supplier of flowers to UK retailers like M&S, Tesco and Co-op, recently bought South Lincolnshire-based Poplar Flower Farms, the largest tulip grower in the UK.

The acquisition is part of MM's drive to increase its supply of home-grown flowers and bouquets, shortening supply chains and reducing the carbon footprint of the flowers it supplies to UK retail.

Phil Whelan, MM's CEO said: "We are delighted to bring Poplar Flower Farms into the MM family. This is a very important investment for us as we work to shorten our supply chain, reduce our carbon footprint and increase our supply of British-grown cut flowers. All of that with the ultimate aim of creating what we call meaningful moments for our customers, end consumers and employees."

"As a growing global business working in the region, we're confident this expansion will bring an exciting range of new opportunities for existing and prospective employees."

www.mm-flowers.com



MM Flowers: Meaning Makers

Did you know that the bouquets of flowers that you see in the supermarket are processed through MMFlowers' site at Alconbury Weald Enterprise Campus?

MMFlowers recently announced the formation of its Meaning Makers Programme and is looking for passionate and opinionated consumers to share their thoughts on the new products they are designing for flower fixtures up and down the UK.

The team is looking for volunteers to join the programme at the new Floristry Academy at MM Flowers.

By joining the Meaning Makers family, you will have the opportunity to browse through samples and feedback what you look for when purchasing bouquets. This will be held through Meaning Makers events when they have new ranges they would like you to see.

In return for your valued feedback, you will be gifted a beautiful bouquet of flowers to take away with you!

There are no qualifications needed. All ages, genders, backgrounds welcome! All you need to do is look at their flowers and let them know what you think. If this sounds like something you would like to be a part of, please register your interest by scanning the QR code and completing the form, or by contacting MM Flowers directly on 01354 697500.



The Club



An award-winning, timber framed building at the heart of Alconbury Weald's Enterprise Campus, The Club has extensive conference facilities and meeting rooms available to hire, from small meetings to conference space for up to 80 people. The building is fully accessible.

The Hall

The Hall is a bright, spacious room on the ground floor of The Club that provides versatile space for a wide range of events.

Capacity and room layout:

- 24 classroom/boardroom
- 48 cabaret
- 80 theatre style

The Hall is equipped with:

- A large screen and projector that can be connected to laptops and other IT equipment
- Free Wi-Fi
- Tables and chairs, set up to agreed room layout

The Hall is available to hire for £42.50 per hour (+ VAT). Minimum hire is two hours.



Meeting Rooms

The Club has three meeting rooms available to hire on the second floor, with inspiring views across Alconbury Weald and beyond.

The rooms are equipped with:

- Wide screens for displaying presentations
- Air conditioning
- Password protected Wi-Fi
- Boardroom table and chairs set out boardroom style

All meeting rooms are available to hire for £25.00 per hour (+ VAT).

- Club 2 can accommodate up to 10 people
- Club 3 can accommodate up to 4 people
- Club 4 can accommodate up to 16 people

Rooms are available from 9am-5pm Monday to Friday. Tea, coffee, water and biscuits are included. Those hiring the venues are also welcome to organise their own caterers to provide lunch, which will be delivered to them on arrival.

The Club has free parking to the rear of the building, which is activated through registration number entry at reception. There is a bus stop for the AW1 outside The Club building.

There is also free co-working space available on the ground floor. No need to book.

To find out more, arrange a tour of the facilities or make a booking, please call 01480 413141 or email Info@alconbury-weald.co.uk.



At its heart, Alconbury Weald has been designed to encourage a healthy, sustainable lifestyle, with the right infrastructure and services being put in place for people to lead low carbon lives as the development rolls out.

Enhanced bus service

Urban&Civic has been working with Dews and Stagecoach to increase the bus provision to support residents and employees to get about sustainably. The new service — which launched in September — is subsidised by Urban&Civic and responds to resident feedback about the times they need to connect to Huntingdon and Peterborough.

The previous bus times from the AW1 and 904 services ensured a half hourly service between 6.30am and 6pm, but the new services extend this to tie in with later train and bus services.

The new AW1X offers an express service between Alconbury Weald and Huntingdon Town Centre at 6.50pm, and from Huntingdon to Alconbury Weald at 7.15pm, to tie in with train times and help commuters make sustainable travel choices. A new service from The Boulevard to Huntingdon at 7.45am on Saturdays is also being introduced.

The AW1 bus service — which uses a specially designed low carbon vehicle — launched in January 2022 to connect Alconbury Weald and the surrounding villages to Huntingdon town, and bus and rail station. Last summer, the service was extended through the development and additional bus stops incorporated in the route.

This extension further supports commuters and leisure users and the route will continue to evolve as the development rolls out.



Natalie Leigh-Brown, Community Development Lead for Alconbury Weald, said: “Getting the approach on bus services is always challenging and we are subsidising these early services to ensure they are available to provide real alternatives to the car. It has been important to work with the community to help shape the services they need now, and ensure they are viable in the long term.

“We hope the increased frequency and the fantastic smart buses and friendly drivers encourage more people to make use of the service — whether they live or work here: and we continue to work with local travel partners to drive other ways of supporting people to get about sustainably. It has been great to see passenger numbers rise, and we hope this will draw more people to use this great service.”

The new timetable is also available online: www.dews-coaches.com

Pedal power

Alconbury Weald also has an extensive network of cycle paths throughout the development and a range of initiatives to help people get out and about by bike.

Pool bikes: To help people living and working at Alconbury Weald to travel around the development more sustainably, 13 pool bikes are available to hire for up to 24 hours for leisure, shopping, commuting or business use.

Cycle initiatives: Alconbury Weald residents have access to a range of free initiatives including bike hire, 1-2-1 cycle training, bike servicing and bike maintenance training.

Find out more information and an application form to hire a pool bike, email alconburyweald@smartjourneys.co.uk.

Car sharing

Launched last October at Alconbury Weald, Liftshare is a great way to save money, reduce CO₂ emissions and reduce stress — as a driver, passenger or both.

If you haven't already joined, simply follow the steps below:

- 1 Download the Liftshare Companion App
- 2 Open the App and click 'join Liftshare'
- 3 Click 'join a community' and search 'Urban&Civic'
- 4 Add in your details i.e. your journey, if you are a driver or passenger (or both)
- 5 Let the App do the rest and find matches!

Find out more at www.liftshare.com/uk/community/alconburyweald

Big Commuter Survey

In October smart journeys, the Travel Plan Coordinator for Alconbury Weald, carried out its annual travel survey to find out more about travel choices of people living and working on the development, and gain a better understanding of the barriers that prevent commuters from using more sustainable modes of transport.

The data collected helps influence future transport decisions and public transport improvements across the local area. It will also be used to inform future travel incentives smart journeys offer to residents and employees at Alconbury Weald.

A141 consultation

Cambridgeshire County Council, Cambridgeshire and Peterborough Combined Authority and Huntingdonshire District Council are consulting on proposed enhancements to the A141 and the travel network around St Ives and the Huntingdon areas.

The package of improvements proposed cover: active travel routes; public transport with a focus on bus travel including three Park and Ride sites, three Cambridgeshire Guided Busway extensions; and the proposed development of a bypass as part of a comprehensive A141 and St Ives Travel Network Improvements Package.

Find out more and have your say by 27 November 2024:

www.consultcambs.uk/engagement/hq.com/a141-stives



Community Wellbeing Day

From 7.30am on Saturday, 25 January 2025
at Alconbury Weald



Our Community Wellbeing Day offers some great ways to relax, reconnect and recharge as you head into the new year.

Health and wellbeing sessions at The Pavilion

From beginners to experienced practitioners, everyone is welcome to take part in a variety of wellness activities designed to help your health, strength and fitness.

Activities include:

- Yoga
- Fitness pilates
- Tai Chi
- Mindfulness exercises
- Strength and balance
- Indian head massage/back, neck and shoulder massage

Community Garden planting

Come along to help plant hedgerows at your new community garden from 11am to 1pm. Equipment will be provided, but please wrap up warm and bring spades and gardening gloves if you have them.

Refreshments

Food trucks will be providing refreshments outside The Pavilion and at the Community Garden.

Bookings

Spaces are limited and need to be booked in advance on EventBrite — search 'Alconbury Weald'. Apart from massage, all sessions are free.

Alconbury Weald

Master Developer

Urban&Civic

Urban&Civic, The Club
Alconbury Weald Enterprise Campus
Alconbury Weald, Huntingdon
Cambridgeshire PE28 4XA

E: info@alconbury-weald.co.uk
T: 01480 413141

www.alconbury-weald.co.uk
www.urbandcivic.com

Follow us on X:
[@AlconburyCampus](https://twitter.com/AlconburyCampus)

Follow us on Instagram:
[alconburyweald](https://www.instagram.com/alconburyweald)

Follow us on Facebook:
www.facebook.com/alconburyweald